

# Crane Load Indicator

Model LMI-01



The leading manufacturing company and supplier of **Crane Load Indicator and Measurements Products**



**Address: Saras Equipments, Building No.12, Naresh Park, Nangloi, New Delhi-110041**

**Website – [www.sarasequipments.com](http://www.sarasequipments.com)**

## Available for different types of Crane



Model LMI-01



LED Board

For

- EOT/HOT Cranes.
- Gantry Cranes.
- Girder Bridge Cranes.
- Jib Cranes.
- Double Girder Cranes.
- Single Girder Cranes.
- Monorail.
- Chain Hoist Crane
- Floor Mounted Winch Machine



# Available Items in Crane Load Indicator for EOT/Gantry Crane



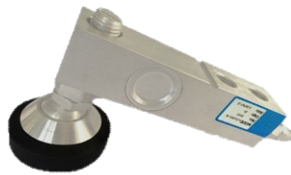
**Load Moment Indicator**



**LED Board**



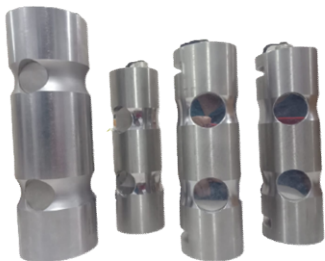
**SMPS**



**Load Sensor**



**Buzzer**



**Pin Type Load Cell**



**Rope Tension Meter**



**Rope Clamp**



**S Type Load Cell**



**LOAD MOMENT INDICATOR**



## Features

- Easy to Install and operate
- Product warranty
- Globally services support available
- Lifetime telephonic support & simple on board calibration
- Made in India

## Provided Parameters

- Actual load
- Over load alarm
- Relay Cut Off (NO/NC, Common)
- Easy to calibrate
- We can set overload anywhere (By User)
- Overload alert (Audible, Physical Cut off)
- Load Accuracy +/- 2% or better





## LED BOARD

### Specification:

<b>Cabinet /body :</b>	Ms Material with powder coated
<b>Mounting Type:</b>	Crane
<b>Dimensions:</b>	(L*H*B) 640*218*80 MM
<b>Numbers of LED:</b>	4096 LEDs
<b>Communication:</b>	RS 232 /9 pin or PG7
<b>Colour:</b>	Red
<b>Ambient temperature:</b>	up to 55 degree Celsius
<b>Height of characters:</b>	125 mm
<b>Working voltage:</b>	220v, single phase AC, 50Hz
<b>Life of LEDs:</b>	>40000hrs LED modules
<b>Type:</b>	ultra bright leds
<b>Pixel pitch:</b>	5mm
<b>Total character per board:</b>	8 characters

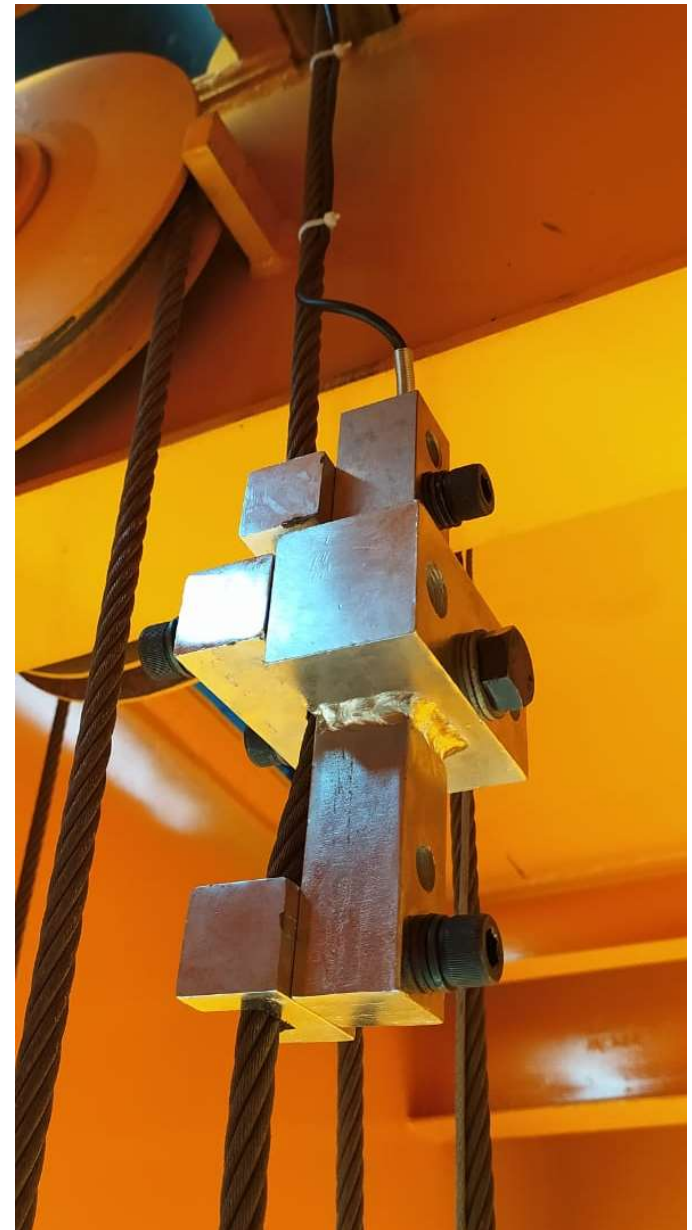




**Rope Clamp**

## Specification:

<b>Material of Construction:</b>	<b>MS steel</b>
<b>Mounting:</b>	<b>Directly on wire rope or flexible assembly</b>
<b>Rope Diameter:</b>	<b>12mm to 45mm</b>
<b>Maximum Capacity:</b>	<b>As required</b>
<b>Load cell:</b>	<b>Yes</b>
<b>Hanging:</b>	<b>Yes</b>
<b>Linearity:</b>	<b>2% better</b>
<b>Operating Temp:</b>	<b>-10 °C to 60°C</b>





## Rope Tension Meter

### Specification:

<b>Material of Const.:</b>	<b>MS Iron steel or EN38.</b>
<b>Bearings:</b>	<b>6 Nos.</b>
<b>Mounting:</b>	<b>Directly on boom or flexible assembly</b>
<b>Rope Diameter:</b>	<b>8mm to 45mm</b>
<b>Sheave Diameter:</b>	<b>100mm, 125mm</b>
<b>Maximum Capacity:</b>	<b>As required</b>
<b>Linearity:</b>	<b>+/-2% or better</b>
<b>No of pulley:</b>	<b>03</b>
<b>IP standard:</b>	<b>IP 67</b>
<b>Bearings:</b>	<b>6 Nos.</b>





## S-Type Load Cell

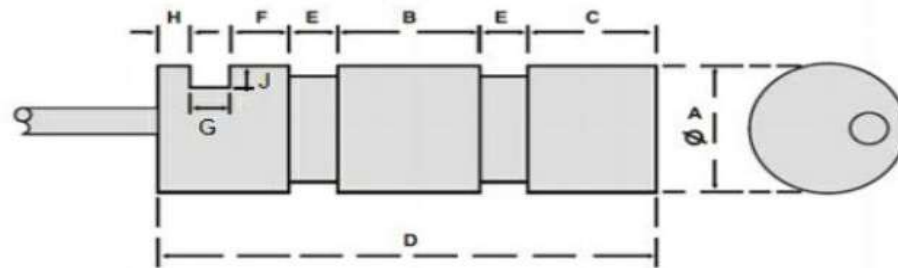
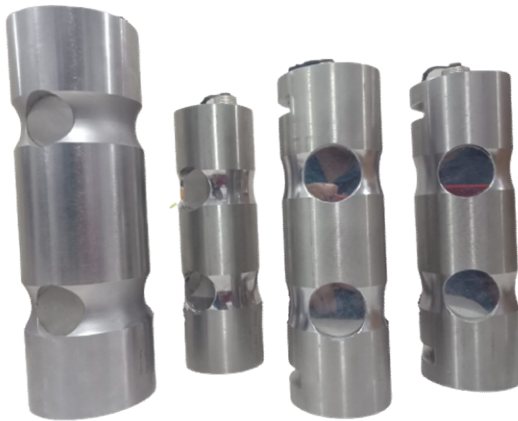
### Specification:

Brand	Saras
capacity Kg	1T,1.5T,2T,3T,5T
Safe overload (%F.S) :	150
Ultimate overload (%F.S) :	200
Rated output(mv/v) :	2.0 ± 0.005
excitation voltage Vdc	upto 12
combined error %FS	± 0.03
creep %FS/30min	± 0.024
input resistance Ω	350 ± 5
output resistance Ω	350 ± 3
insulation resistance M Ω	≥ 5000 @ 100 Vdc
operating temperature range °C	-10 ~ +40
compensated temperature range °C	-20 ~ +55
Electrical connection cable	4 core shielded PVC cable, Ø 5 × 3m excitation(+):Red excitation(-):Black signal(+):Green signal(-):White





# PIN TYPE LOAD CELL



Capacity Tf	A	B	C	D	E	F	G	H	J
0.5,1,2	25	23	21	81	8	9.5	6.5	5	4.5
3,5	35	37	26.5	110	10	13	6.5	7	6
10	50	52	38.5	157	14	20	8.5	10	7
20	65	72	42	192	18	23.5	8.5	10	9.5
30	75	82	53.5	225	18	31	10.5	12	10.5
50	85	97	61.5	260	20	39	10.5	12	12
75,100	100	102.5	78	328	35	55	10.5	12	14
150, 200	120	144	95	429	40	75	15	20	15
300	150	168	120	521	45	98	20	25	17.5
400	177	160	160	615	50	140	25	30	20

## Products We Deal In:

- Crane Safe Load Indicator For All Type Cranes
- Crane Safe Load Indicator With Graphical Display
- Wireless Anemometer For Cranes
- Wire Anemometer For Cranes
- Load Moment Indicator (LMI) For Boom Lift
- Load Cell In Various Capacity
- Overload Protection Device For Cranes
- Rear View Camera
- E-mas System
- Wire Rope Suspended Platform Overload Indicator
- Biometric Sensor For Cranes
- Digital Load Indicator
- Digital Crane Scale
- Spring Operated Cable Reeling Drum
- Weighing Scale PCB
- SMPS (Switch Mode Power Supply)
- LED Board Etc...



LMI (Load Moment Indicator)



CSLI (Crane Safe Load Indicator)



**WE CARE ABOUT EVERY CUSTOMERS**  
**THANK YOU!**

Contact No. 9650818134, 7838568812, 7838568877,, 7838568705,  
011-44755907

Add: Building No. 12, Naresh Park, Najafgarh Road, Nangloi,  
New Delhi – 110041

Customer Care:- 8448877782

Mail us at: [sales@sarasequipments.com](mailto:sales@sarasequipments.com), [sarasequipments@gmail.com](mailto:sarasequipments@gmail.com)

---

Our Entire Range Of Crane Products Is Available On Our Website. Do Visit And  
Book The Products You Need.

**Website: [www.sarasequipments.com](http://www.sarasequipments.com)**

**Follow Us :**    