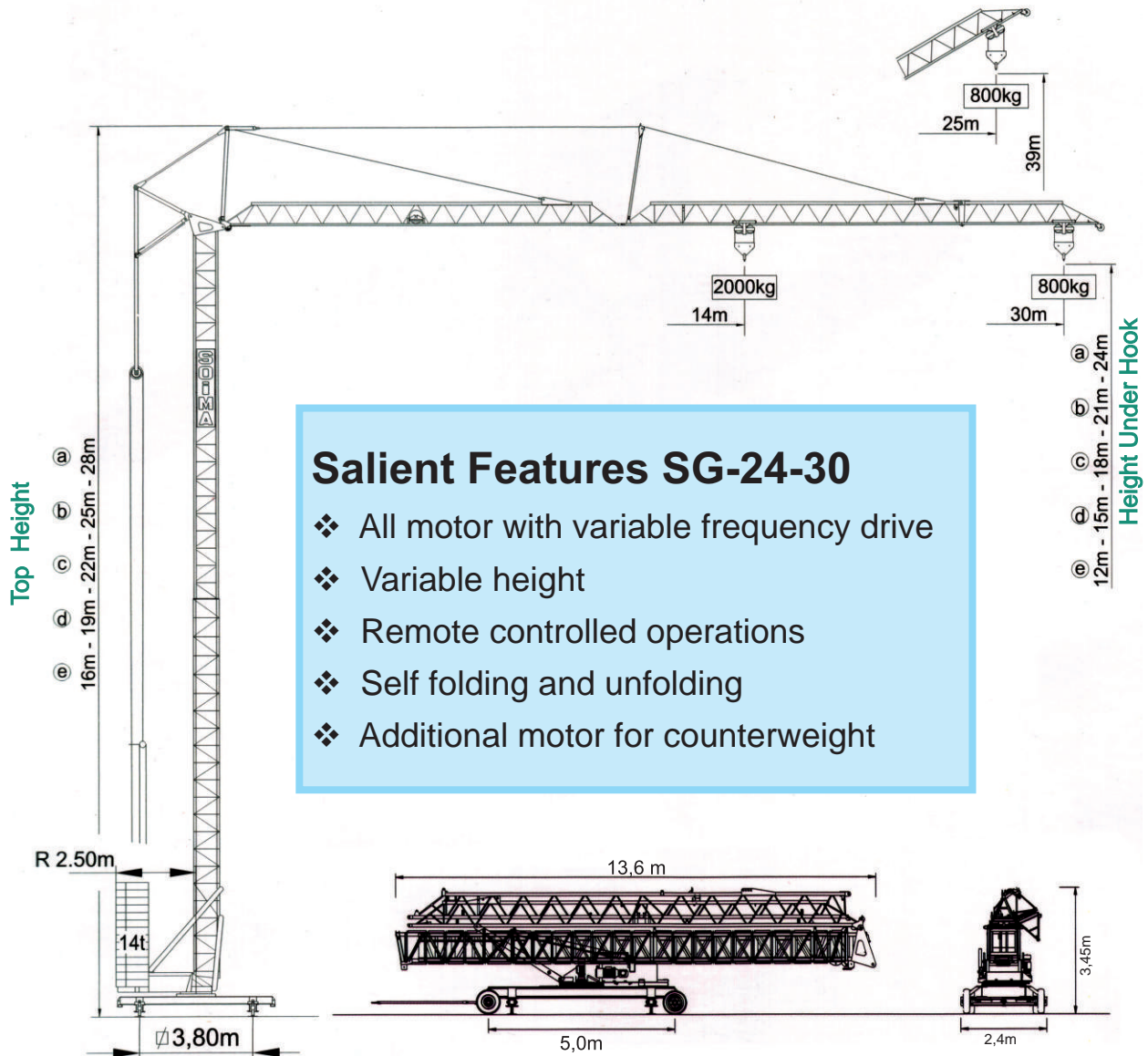
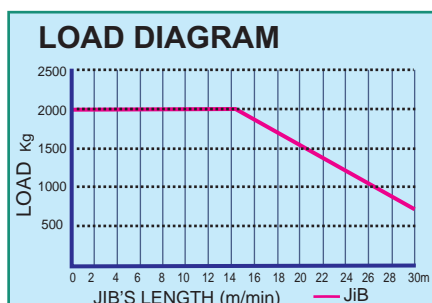
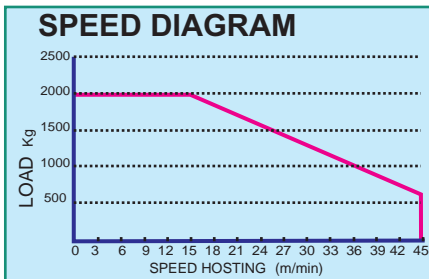


# ALPHA SG 24-30



## CHARACTERISTICS



		SPEED	
	HOISTING	0.45 m/min	7.5 kW
	SLEWING	0-1 rpm	2.2 kW
	TROLLEYING	0 - 40 m/min	1.5 kW
		ELECTRIC POWER	
		13.2 kva	
		VOLTAGE	Feeding 400 V ±5% (50/60 Hz)
WEIGHT OF CRANE		11,400 kg	
COUNTER WEIGHT (REAR)		14,000 kg	
COUNTER WEIGHT (SIDE)		3,000 kg	
COUNTER WEIGHT (MOTOR)		3 kW	