

## Hydraulic Controls

Type	Pressure compensating piston-type pump.	
Output – Maximum	281 L/min	74.2 gal/min
Relief Valve Setting – Counterweight	17 240 kPa	2,500 psi
Relief Valve Setting – Hook and Boom Winch	33 000 kPa	4,786 psi

- Pump output at 2,231 rpm (2,100 engine rpm) and maximum pressure at 7000 kPa (1,015 psi).

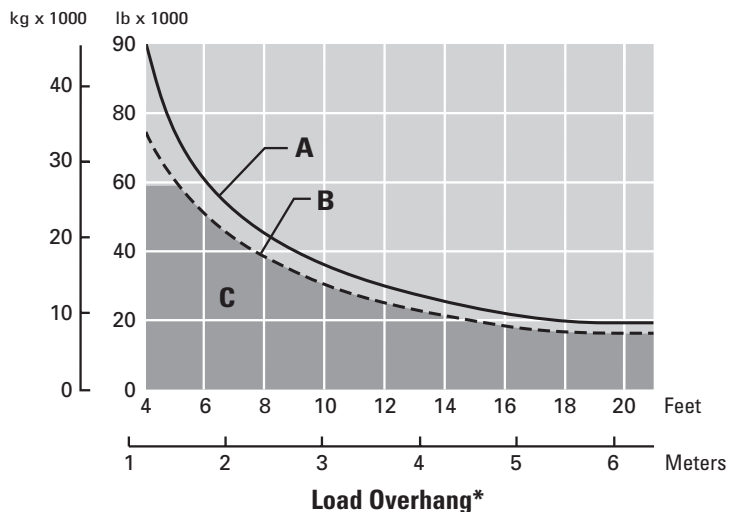
## Service Capacities

Fuel Tank	479 L	126.5 gal
Crankcase (with Filter)	31 L	8.2 gal
Transmission, Bevel Gear, and Steering Clutch	183 L	48.3 gal
Final Drives (each)	13 L	3.4 gal
Cooling System	77.4 L	20.4 gal
Hydraulic Tank	54.1 L	14.3 gal
Recoil Spring Compartments (each)	57 L	15 gal

## Standards

- Brakes meet the standard SAE J/ISO 10265 MARCH99.
- Optional ROPS (Rollover Protection Structure) offered by Caterpillar for the machine meets the criteria of SAE J397 OCT95, SAE J1040 MAY94, ISO 3164 1995, and ISO 3471-1:1994.

## Lifting Capacity



### Specified Equipment

- Diameter wire rope 19 mm 0.75 in
- Rope minimum breaking strength 261.66 kN 58,800 lb
- 4 part load line
- 4 part boom line
- Counterweight extended 5073 kg 11,184 lb
- Standard boom 6.10 m 20 ft
- Total operating weight 31 845 kg 70,206 lb

**A** Lift capacity at tipping point\*

**B** Rated load capacity\*

**C** Working range\*

\* Per ISO 8813:1992