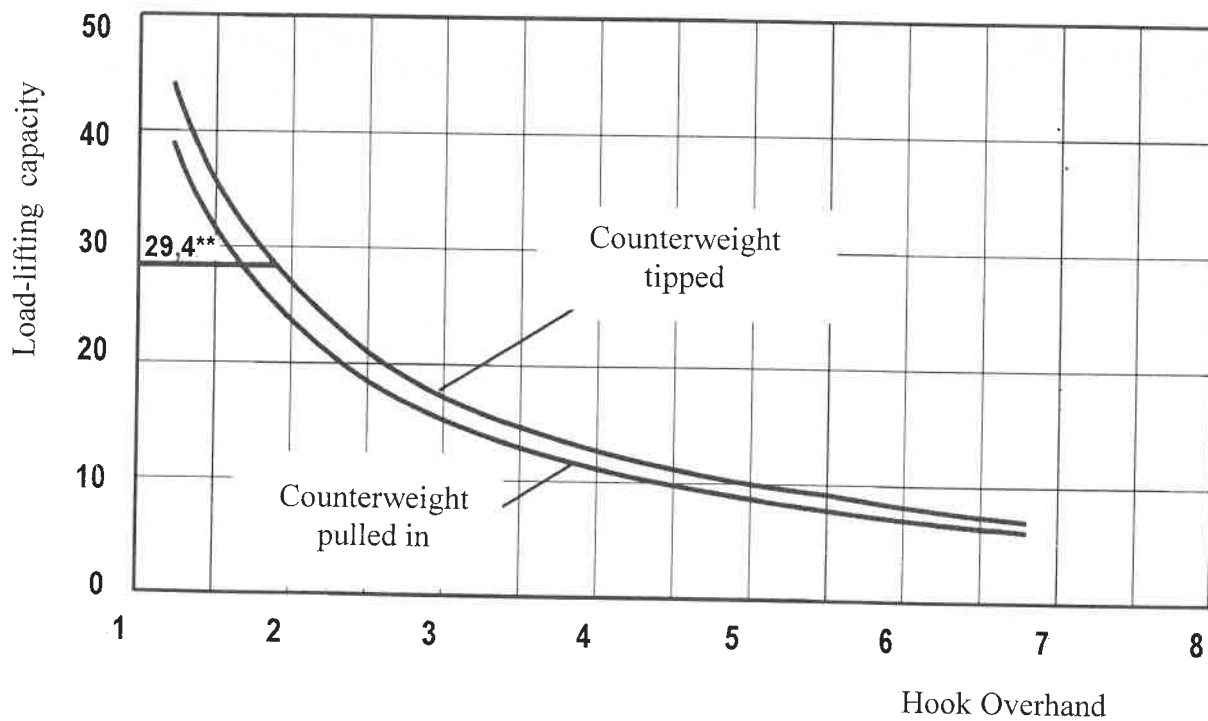


**RATED LOAD-LIFTING CAPACITY OF PIPELAYERS TG-221JA AND TG-221KI
BY STABILITY WHILE WORKING AT A HORIZONTAL SITE DEPENDING ON
HOOK OVERHANG (ACCORDING TO SAE J1746)***

Hook overhang from the left tipping edge, m	1,22	1,5	2,5	3,5	4,5	5,5	6,5	6,7
Load-lifting capacity at counterweight extended, t	44,2	35,7	21,0	14,7	11,2	8,9	7,4	7,0
Load-lifting capacity at counterweight pulled-in, t	39,1	31,6	18,5	12,9	9,8	7,8	6,4	6,1

LOAD LIFTING CAPACITY DIAGRAM



* Recommended lifting capacity values while performing different types of operations are given in Chapter "Safety Indicators";

** Max hook load while working in a column.