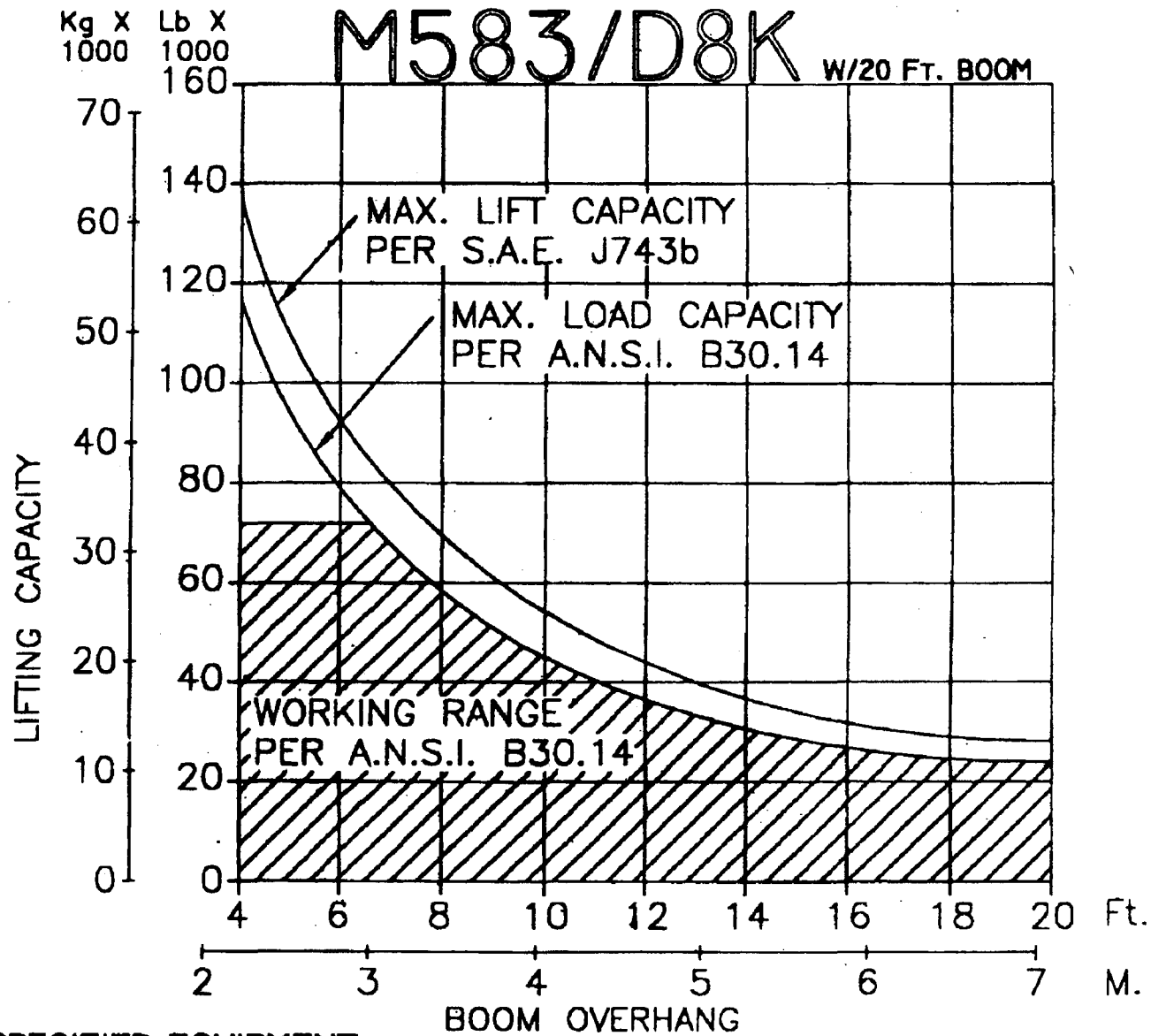


M583/D8K

W/20 FT. BOOM



SPECIFIED EQUIPMENT:

3/4"(19mm) WIRE ROPE, 58,800Lbs(26,672Kg) MIN. BREAKING STRENGTH (ROPE FACTOR 4.9) 6 PART LOAD LINE, 5 PART BOOM LINE.
23,000Lbs.(10,433Kg.) OF EXTENDIBLE COUNTERWEIGHT.