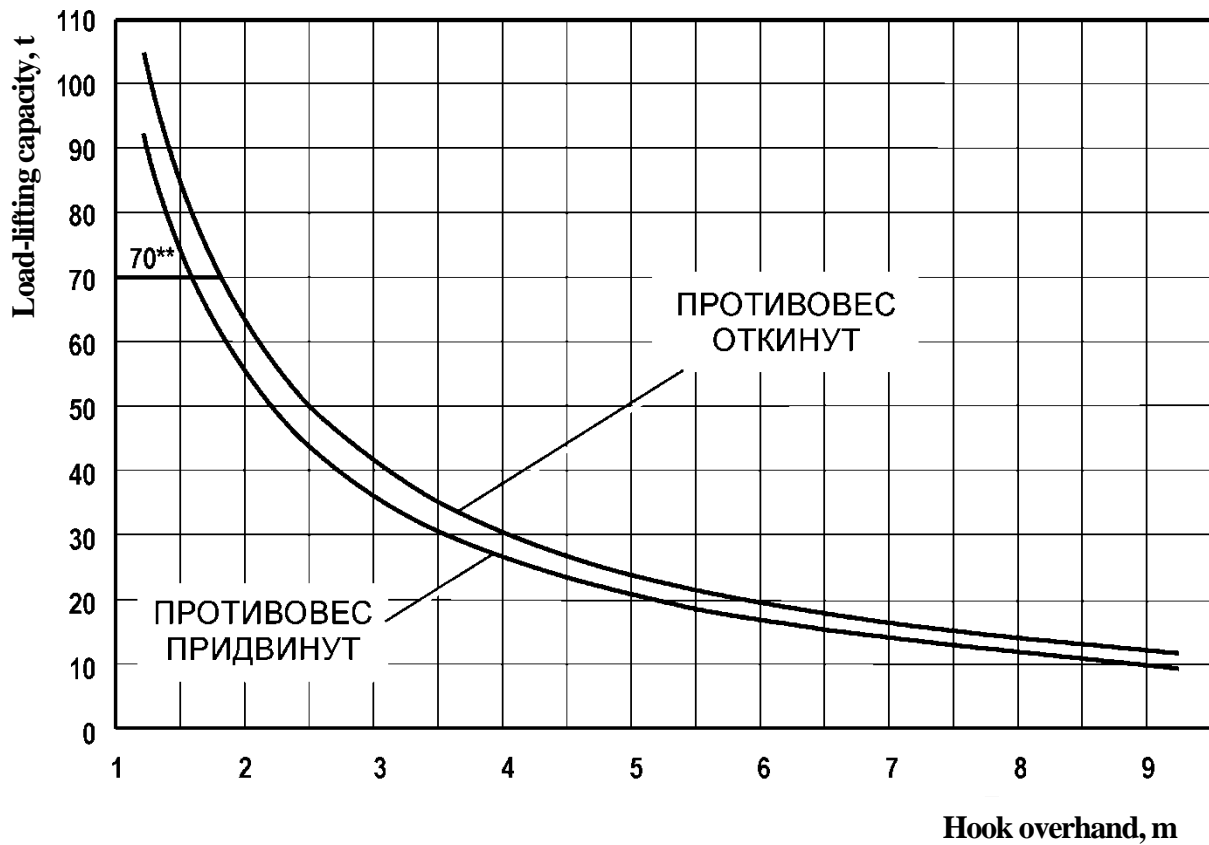


TG-503 LOAD CHART



* Recommended lifting capacity values while performing different types of operations are given in Chapter "Safety Instruments";

** Max hook load while working in a column.

RATED LOAD-LIFTING CAPACITY OF PIPELAYERS TG-503YA AND TG-503C WITH RESPECT TO STABILITY WHILE WORKING AT A HORIZONTAL SITE DEPENDING ON HOOK OVERHANG (ACCORDING TO SAE J1746)*

Hook overhang from the left tipping edge, m	1,22	1,5	2,5	3,5	4,5	5,5	6,5	7,5	8,5	9,25
Load-lifting capacity at counterweight extended, t	104,9	84,9	50,0	35,1	26,7	21,4	17,8	15,1	13,0	11,8
Load-lifting capacity at counterweight pulled-in, t	92,4	74,7	43,9	30,7	23,4	18,6	15,4	13,0	11,2	8,7