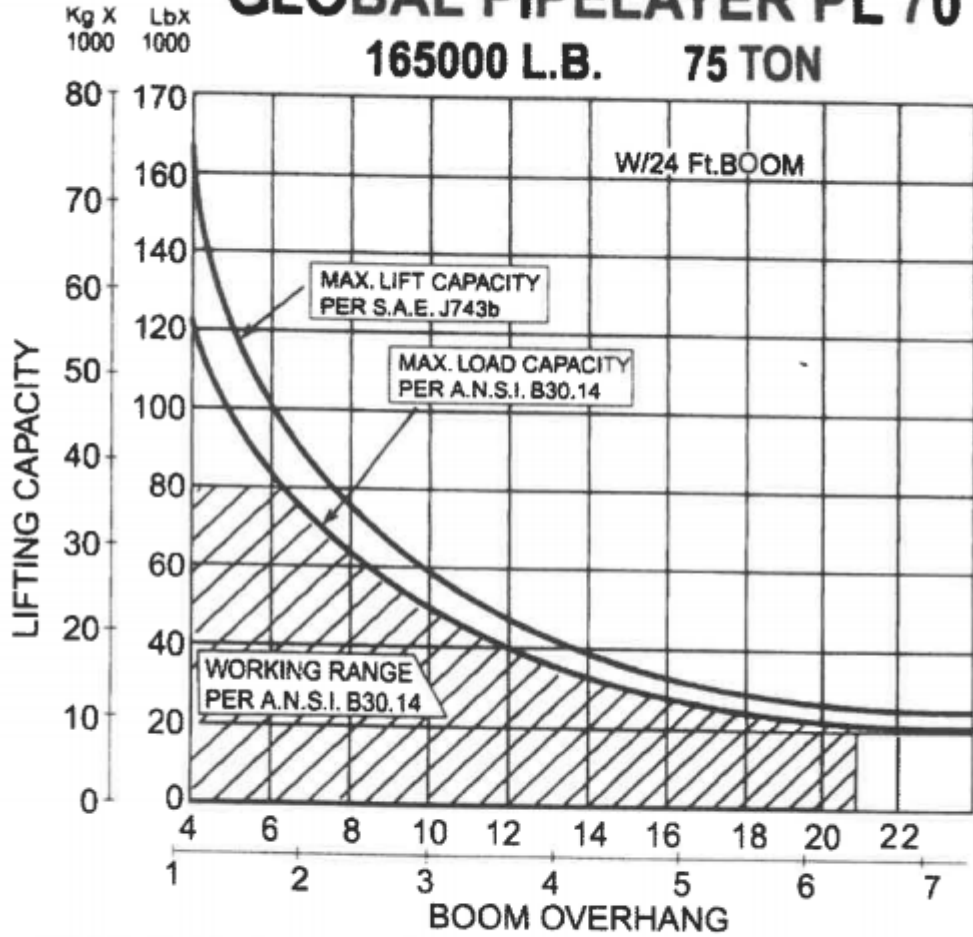


# GLOBAL PIPELAYER PL 70

## 165000 L.B. 75 TON



### SPECIFIED EQUIPMENT:

3/4" (19mm) WIRE ROPE, 58,800Lbs (26.672Kg) MIN. BREAKING STRENGTH  
 5 PART LOAD LINE, 5 PART BOOM LINE.  
 (10,400 Kg.) OF EXTENDIBLE COUNTERWEIGHT. BOOM-24 Ft.