

1.2 SPECIFICATIONS

| | | |
|---|--|--------------------------|
| Model | TG-301Ja, TG-301C | TG-301Ja-1, TG-301C-1 |
| Type | Crawler, boom-type, on the base of 20 traction class tractor with hydraulic drive for hoisting and counterweight tipping devices | |
| Pipelayer operating weight, kg | 44000 | 44000 |
| Moment of load stability, t·m, not less than | 77,5 | 77,3 |
| Rated load-lifting capacity at 2.5m hook overhang from the hook left tipping edge, t, not less than | 31,0 | 26,0 |
| Maximum allowed hook load during operation in insulation-laying string, t | 43,4 | 36,4 |
| Rated tilting load at hook overhang of 1.22m from the left tipping edge, t, not less than | 65,7 | 65,6 |

TG-301Ja, TG-301C LIFTING HEIGHT AND LOWERING DEPTH OF THE HOOK FROM THE NEUTRAL SURFACE OF THE GROUND DEPENDING ON THE HOOK OVERHANG AT FREE GROUSERS

| | | | | | | | | | |
|--|------|-----|-----|-----|-----|-----|-----|-----|-----|
| Hook overhang from the left tipping edge, m | 1,22 | 1,5 | 2,5 | 3,5 | 4,5 | 5,5 | 6,5 | 7,5 | 7,8 |
| Hook lifting height from the neutral surface of the ground, m | 6,3 | 6,3 | 6,1 | 5,7 | 5,1 | 4,3 | 3,2 | 1,3 | 0,3 |
| Depth of hook lowering from the neutral surface of the ground, m | 3,5 | 3,5 | 3,6 | 4,0 | 4,5 | 5,2 | 6,3 | 8,1 | 9,1 |

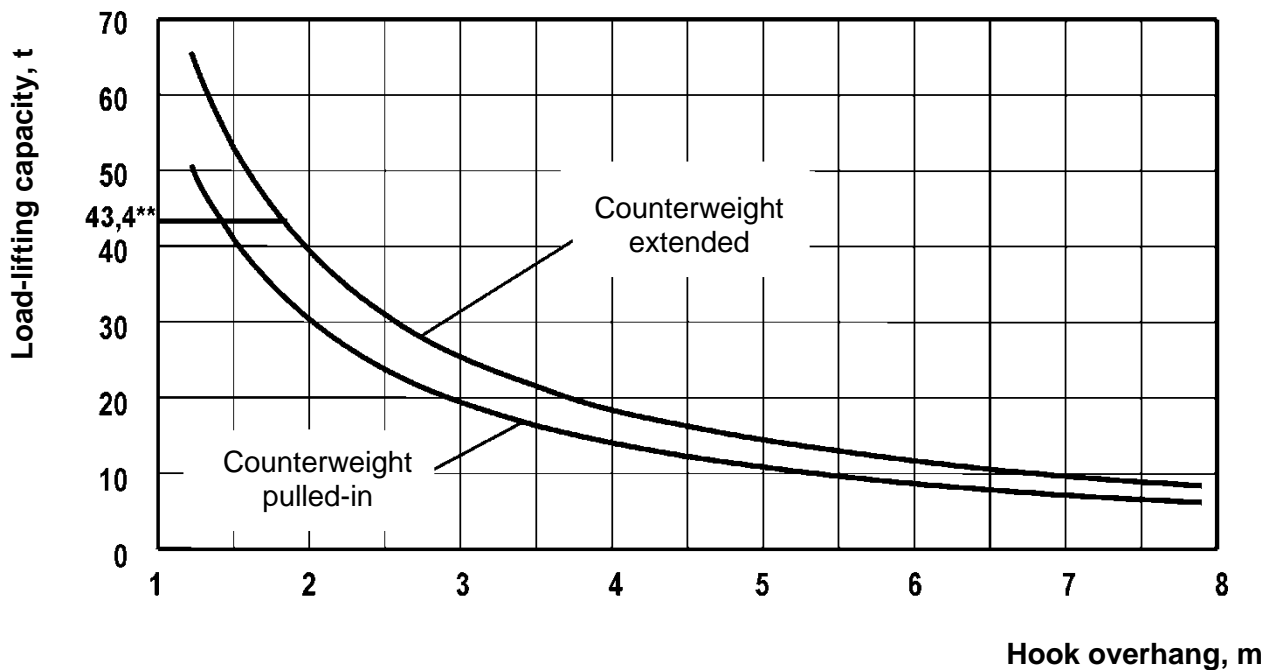
TG-301Ja-1, TG-301C-1 LIFTING HEIGHT AND LOWERING DEPTH OF THE HOOK FROM THE NEUTRAL SURFACE OF THE GROUND DEPENDING ON THE HOOK OVERHANG AT FREE GROUSERS

| | | | | | | | | | | |
|--|------|-----|-----|-----|-----|-----|-----|-----|-----|------|
| Hook overhang from the left tipping edge, m | 1,22 | 1,5 | 2,5 | 3,5 | 4,5 | 5,5 | 6,5 | 7,5 | 8,5 | 9,2 |
| Hook lifting height from the neutral surface of the ground, m | 7,7 | 7,7 | 7,5 | 7,2 | 6,7 | 6,1 | 5,3 | 4,2 | 2,6 | 0,4 |
| Depth of hook lowering from the neutral surface of the ground, m | 3,7 | 3,7 | 3,9 | 4,2 | 4,6 | 5,2 | 5,9 | 7,0 | 8,5 | 10,6 |

**TG-301JA,TG-301C PIPELAYER RATED LOAD LIFTING CAPACITY VALUES
OF STABILITY WHEN OPERATING AT HORIZONTAL SITE
DEPENDING ON THE HOOK OVERHANG (ACCORDING TO SAE J1746)***

| | | | | | | | | | |
|---|------|------|------|------|------|------|------|-----|-----|
| Hook overhang from the left tipping edge, m | 1,22 | 1,5 | 2,5 | 3,5 | 4,5 | 5,5 | 6,5 | 7,5 | 7,9 |
| Load-lifting capacity when counterweight is tipped out, t | 65,7 | 53,1 | 31,0 | 21,6 | 16,3 | 13,0 | 10,6 | 8,9 | 8,4 |
| Load-lifting capacity when the counterweight is drawn up, t | 50,7 | 40,9 | 23,7 | 16,3 | 12,2 | 9,6 | 7,8 | 6,5 | 6,1 |

LOAD-LIFTING CAPACITY DIAGRAM



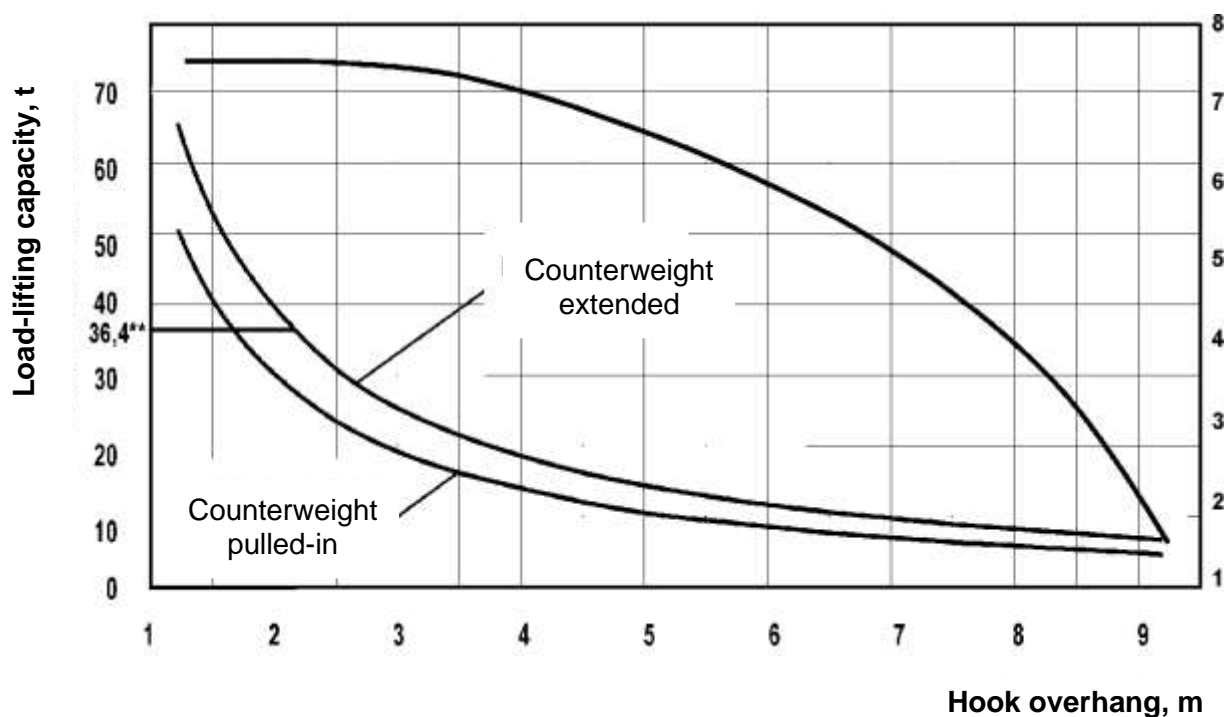
* Recommended load-lifting capacity values when carrying out different kinds of jobs are given in «Safety instruments» section;

** Allowed maximum hook load when working in column.

**TG-30JA, TG-301C PIPELAYER RATED LOAD LIFTING CAPACITY VALUES
OF STABILITY WHEN OPERATING AT HORIZONTAL SITE
DEPENDING ON THE HOOK OVERHANG (ACCORDING TO SAE J1746)***

| | | | | | | | | | | |
|---|------|------|------|------|------|------|------|-----|-----|-----|
| Hook overhang from the left tipping edge, m | 1,22 | 1,5 | 2,5 | 3,5 | 4,5 | 5,5 | 6,5 | 7,5 | 8,5 | 9,4 |
| Load-lifting capacity when counterweight is tipped out, t | 65,6 | 52,9 | 30,9 | 21,5 | 16,2 | 12,9 | 10,6 | 8,9 | 7,6 | 6,7 |
| Load-lifting capacity when the counterweight is drawn up, t | 50,7 | 40,8 | 23,6 | 16,3 | 12,2 | 9,6 | 7,8 | 6,5 | 5,5 | 4,7 |
| Hook overhang from the left tipping edge, m | 1,22 | 1,5 | 2,5 | 3,5 | 4,5 | 5,5 | 6,5 | 7,5 | 7,8 | |
| Hook lifting height from standing level, m | 6,3 | 6,3 | 6,1 | 5,7 | 5,1 | 4,3 | 3,2 | 1,3 | 0,3 | |
| Hook lowering depth from standing level, m | 3,5 | 3,5 | 3,6 | 4,0 | 4,5 | 5,2 | 6,3 | 8,1 | 9,1 | |

LOAD-LIFTING CAPACITY DIAGRAM



* Recommended load-lifting capacity values when carrying out different kinds of jobs are given in «Safety instruments» section;

** Allowed maximum hook load when working in column.