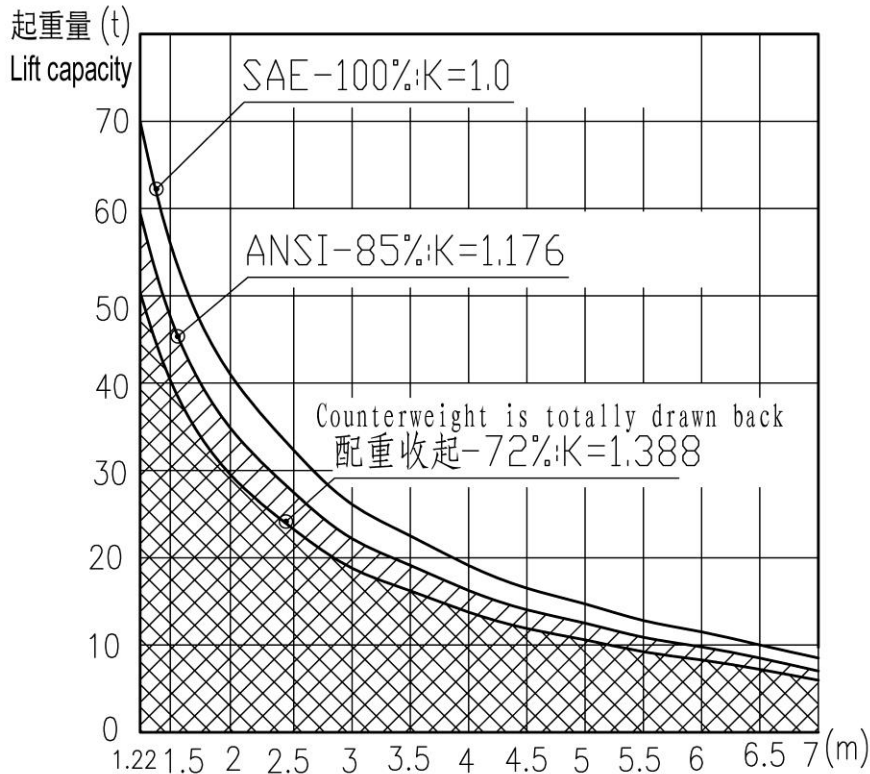


### 3.2 DGY70H lift performance curve and parameters

DGY70H 起重性能参数  
DGY70H LIFT CAPACITY PARAMETERS



幅度Range (m)		1.22	1.5	2	2.5	3	3.5	4	4.5	5	5.5	6	6.5	7
起重量Lift capacity (t)		70	56	41	32.3	26.4	22.5	19.1	16.5	14.7	12.8	11.5	10	8.5
85%起重量 (t)		59.5	47.6	34.8	27.4	22.4	19.1	16.2	14.0	12.4	10.8	9.7	8.5	7.2
起升高度 Lift height (m)	9m boom吊臂	7	6.97	6.89	6.78	6.65	6.48	6.28	6.04	5.76	5.44	5.07	4.64	4.14
	8m boom吊臂	6.0	5.97	5.88	5.76	5.60	5.41	5.18	4.90	4.58	4.19	3.74	3.20	2.54
	7m boom吊臂	5	4.96	4.86	4.72	4.54	4.31	4.04	3.71	3.31	2.82	2.21	1.44	

- 1.The range is the horizontal distance from the center of the hook to the outside of the track roller.
- 2.Lift capacity in the table includes the weight of the hook 650kg.
- 3.Lift capacity above is suitable when the machine is at horizontal rigid ground.
- 4.Lift capacity in the table is the max. overturn load, and 85% of it is dynamic load, 70% of it is travelling load. Travelling load cannot be larger than 20t.

Fig 3-2 DGY70H lift performance curve and parameters