



ACE

TX130

NextGen Hydraulic Crane

Rough terrain and rugged articulated pick n move crane.

ACE INDIA'S NO. 1
CRANE BRAND

- Steering wheel operated
- Best in class stability
- Slotted boom
- Self adjusting hook block
- Ergonomically designed front mounted cabin
- Improved kinematics
- Better visibility
- Better creep speed
- Air operated brakes

Specifications

TX130

| | |
|---|---|
| LIFTING CAPACITY (Free on wheels) | 13 Tonnes |
| ENGINE Rated Power | Mahindra 4485 IAE (BS III CEV) 47.5 HP (34.9 KW) at 2200 RPM |
| ELECTRICAL SYSTEM | 12V, Negative earth with 35 Amp. Alternator and 75 Amp. Battery |
| STEERING | Power steering through orbitrol with twin hydraulic double acting cylinders having 45° articulation on either side . |
| BRAKES Service | <ul style="list-style-type: none"> ● Air operated disc brakes on rear wheels and Pneumatically assisted hydraulic brakes on front wheels. Brakes are actuated through a single pedal |
| Parking | <ul style="list-style-type: none"> ● Parking brake is pneumatically operated |
| HYDRAULIC SYSTEM | <ul style="list-style-type: none"> ● Gear / Intra Vane type Main Pump. ● Three spools control valve with built in Relief valve. ● Suction line has 100 mesh size Strainer while return line is fitted with 25 micron full flow filter. ● Two double acting lift cylinders, two double acting steering cylinders and one double acting extension cylinder. |

| | |
|-------------------------|---|
| TRANSMISSION | Heavy Duty transmission with 6 forward and 2 reverse speeds with high low range selector. |
| Clutch | Hydraulically operated, heavy duty, dry friction cera-metallic clutch plate with diaphragm type pressure plate. |
| Top Speed | 28 KMPH Without load |
| BOOM LUFFING | |
| Range | -3° TO + 70° |
| TELESCOPIC BOOM | Three part slotted boom with hydraulically operated synchronized extensions (11.1 mtrs height). |
| FLUID CAPACITIES | |
| Engine | 8.00 Ltrs. |
| Fuel Tank | 85.00 Ltrs. |
| Hydraulic Tank | 90.00 Ltrs. |
| Transmission | 48.00 Ltrs. |



1 CABIN
Front mounted, ergonomically designed spacious Cabin for better visibility & driveability.



2 INCREASED VISIBILITY
Bigger size front windscreen provided for better visibility and safe operation.



3 EASY MAINTENANCE
The engine is easily accessible for daily maintenance checks including battery, air filter, oil level and cooling system



4 SLOTTED BOOM
Facilitates easier load positioning & fitted with self adjusting hook block.



NOTE : • All above specifications are pertaining to TX130 model fitted with 11.1 Mtrs. boom.
• Rated loads are on the basis of operation on firm and level surface..

Specifications

TX130

| | |
|---------------------------|--|
| TYRES | |
| Front | 11.00 x 20 – 16 PR (4 Nos.) |
| Rear | 13.00 x 24 – 12 PR (2 Nos.) |
| SAFETY | <ul style="list-style-type: none"> ● Hose failure protection. ● Audio over hoisting indication ● Safety brakes on hoist. ● Self-adjusting hook block. |
| HOIST | Winch is driven by hydraulic motor and fitted with self adjusting hook block employing 4 falls of 13mm dia. Rope. |
| Hoist Speed | 50 Mtrs./Min. (Line Speed) |
| STANDARD EQUIPMENT | <ul style="list-style-type: none"> ● ROPS fully enclosed wide view front mounted cabin ● Front work lights ● Reflectors and rear view mirror ● Tool kit ● Cabin fan ● Gauges :- <ul style="list-style-type: none"> a) Water temperature b) Engine oil pressure c) RPM meter cum hour recorder d) Air pressure |

OPTIONAL EQUIPMENT

- Fly jib (Max. Capacity : 1.25 tonnes)
- Spark arrestor
- Safe load indicator/ LMI
- Front & Rear Wheel Guards
- Rear View Camera
- Beacon rotating light
- Over Hoist hydraulic cutoff
- Fire extinguisher
- Air brakes
- Front outriggers
- Front and side proximity sensors
- Cabin front glass protector
- 3 Part slotted boom (12.8 mtrs height)

OPERATING WEIGHT

| | |
|--------------|------------|
| Front Axle | 4680 Kgs. |
| Rear Axle | 8280 Kgs. |
| Total Weight | 12960 Kgs. |



5 STEERING WHEEL & CONTROLS
Steering wheel is provided as a standard feature, which along with ergonomically placed operator console and instrument cluster ensures ease of operation.



6 REAR DECK
Spacious & well laid out rear deck for storing lifting tackles etc. and provides ample space for slingers/helpers.



7 OPTIMIZED KINEMATICS AND LOW C.G.
TX130 crane has been designed keeping in mind operational safety parameters with low Center of Gravity (C.G.) providing best in class stability.

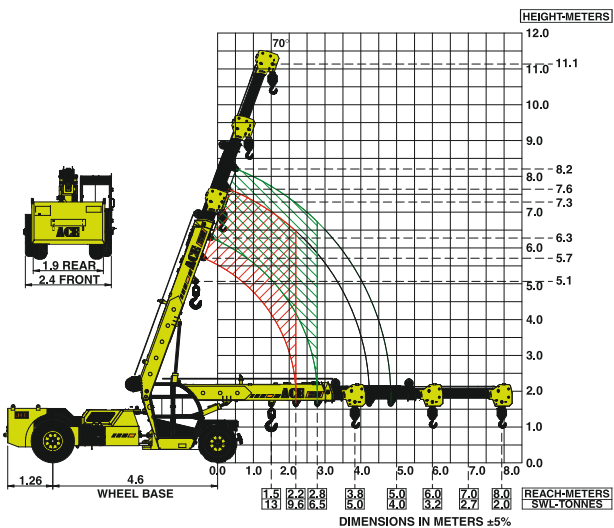


8 GROUND CLEARANCE
Ground clearance of 300mm facilitates easier rough terrain operation.

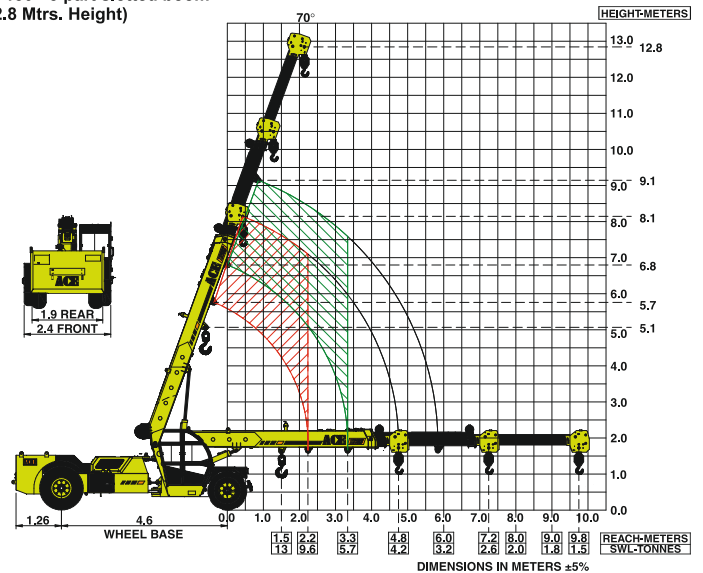
ACE advantages



TX 130 - 3 part slotted boom (11.1 Mtrs. Height)



TX 130 - 3 part slotted boom (12.8 Mtrs. Height)

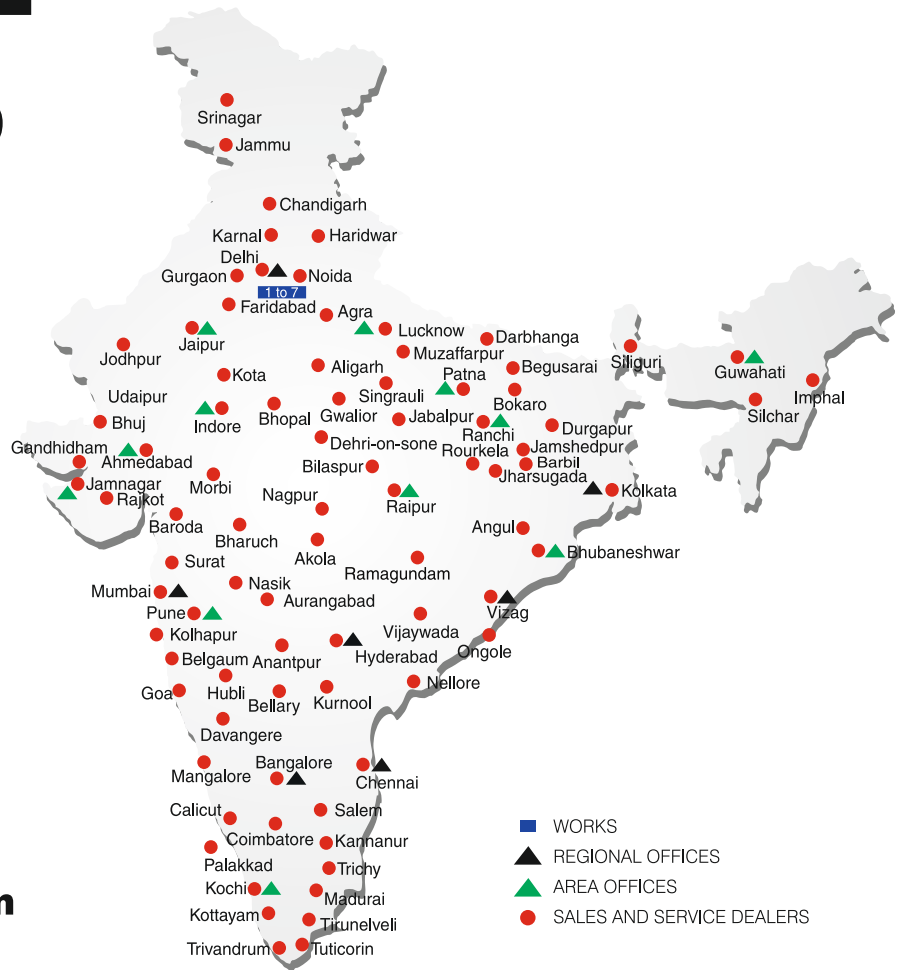


BUILT TO PERFORM



**RELIABLE AND
DEPENDABLE
EFFICIENCY**

NETWORK



**Toll Free Help Line
1800 1800 004**

www.ace-cranes.com

MARKETING H.Q.

4th Floor, Pinnacle
Surajkund, NCR-121009
Ph. : +91-129-4550000
Fax : +91-129-4550022
E-mail: marketing@ace-cranes.com

REGISTERED OFFICE

Dudhola Link Road, Dudhola
Palwal-121102, Haryana
Ph.: +91-1275-280111
Fax: +91-1275-280133
CIN : L74899HR1995PLC053860

MUMBAI OFFICE

31, "Kalpataru Court"
Chembur, Mumbai - 400074
Ph.: +91-22-25206846, 25207070
Fax: +91-22-25207071
E-mail: acemumbai@ace-cranes.com

KOLKATA OFFICE

"Forma Towers" 84-A, Second Floor
AJC Bose Road, Kolkata - 700014
Ph.: +91-9038070630
E-mail: acekolkata@ace-cranes.com

CHENNAI OFFICE

1st Floor, "Alsa Regency", 165
Eldams Road, Alwar Pet
Chennai - 600018
Ph.: +91-44-24314253
Fax: +91-44-24314252
E-mail: acechennai@ace-cranes.com

HERE TO SERVE YOU.

SPARE PARTS & SERVICE

ACE has all India Sales and Service network operating out of all the major cities. These outlets are fully equipped to provide genuine spare parts and services by company trained engineers. These outlets are further supported by company officials based at Delhi, Mumbai, Chennai, Kolkatta, Ahmedabad, Surat, Pune, Jaipur, Chandigarh, Ranchi, Raipur, Indore, Bhubneshwar, Lucknow, Jamnagar, Hyderabad, Bangalore, Guwahati, Patna, Vizag & Kochi.



Action Construction Equipment Ltd.

Contact:



ACE reserves the right to alter any specifications without prior notice. Dimensions, weights & capacities mentioned herein are variable by ± 5%. Accessories if shown are not part of the Standard Equipment.